

BLOOMSBURY CRAFT GUIDE FOR THE COLLECTOR

STEP 1

Start in the East Wing at Studio E9.

JACKY OLIVER - Metalworker Jacky Oliver creates sculptural pieces that combine the heaviness of blacksmithing with the refinement and delicacy of jewellery work. Each piece is completely unique, drawing from a range of metalwork techniques and processes and bringing together narratives from a range of sources, contemporary and historic.



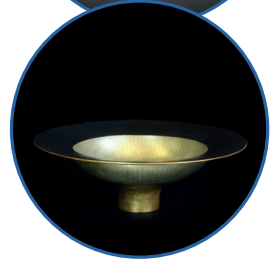
STEP 2

Exit to the left and turn the corner to Studio E3, entrance on your right.

MARK NUEL - Mark Nuell is a jeweller and master of the art of lapidary, the engraving, cutting, or polishing of stones and gems - sadly a dying craft. His fascination with gemstones came from early contact with raw gems in Australia, where his father mined sapphires, and his designs are characterised by distinctive sapphires in shades of blue, green and yellow.



SAMUEL WATERHOUSE - Samuel Waterhouse is a self-taught silver-smith and jeweller who creates contemporary one-off pieces with an aesthetic derived from ancient art. He specialises in using a personal adaptation of the Korean technique Keum-boo, in which he creates and applies various colours of gold to his silverware, often oxidising the exposed silver components to create a dramatic contrast within his work.



STEP 3

Exit to the right in the East Wing and cross the hall to Studio E2.

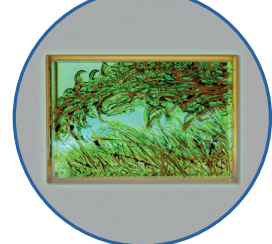
ESNA SU - Artist Esna Su breathes stories into materials to create evocative handcrafted sculptures. Her body of work subtly explores themes of identity and memory and how these are shaken in the context of political instability. She envelops her pieces with heritage, using traditional Turkish techniques of weaving, twining and crochet.



STEP 4

Exit to the left and continue along the corridor to Studio E15, entrance on your right.

HELEN BROUGH - Helen Brough is a multimedia landscape artist working in glass and aluminium, whose work has been exhibited widely in the UK, Europe, USA and Asia. For each of her unique pieces, the glass is painted and fired in a kiln before being illuminated to produce three-dimensional wall mounted landscapes.



STEP 5

Exit to the right and immediately enter Studio E16.

CLAUDIA WASSICZEK - Artist Claudia Wassiczek works with clay, metal and found objects, often combining materials and pushing them to their physical limits. Her artistic practice revolves around organic abstract ceramic sculptures and collage pieces inspired by the concept of time and its effects on our emotional and physical states.



STEP 6

Exit to the left and continue along the corridor until you reach the junction. Turn right and follow the signs up the stairs to the Second Floor.

STEP 7

Turn right until you reach Studio E2T, entrance on your right.

FRANCISCA PRIETO - Francisca Prieto's work is fundamentally three-dimensional, profound and analytical, conceptually as well as technically. It combines collected fragments of history with the architectural principles of space, line and structure. Each artwork is the accumulation of experimentation, a long and considered methodology that fuels the rich character of every work.

